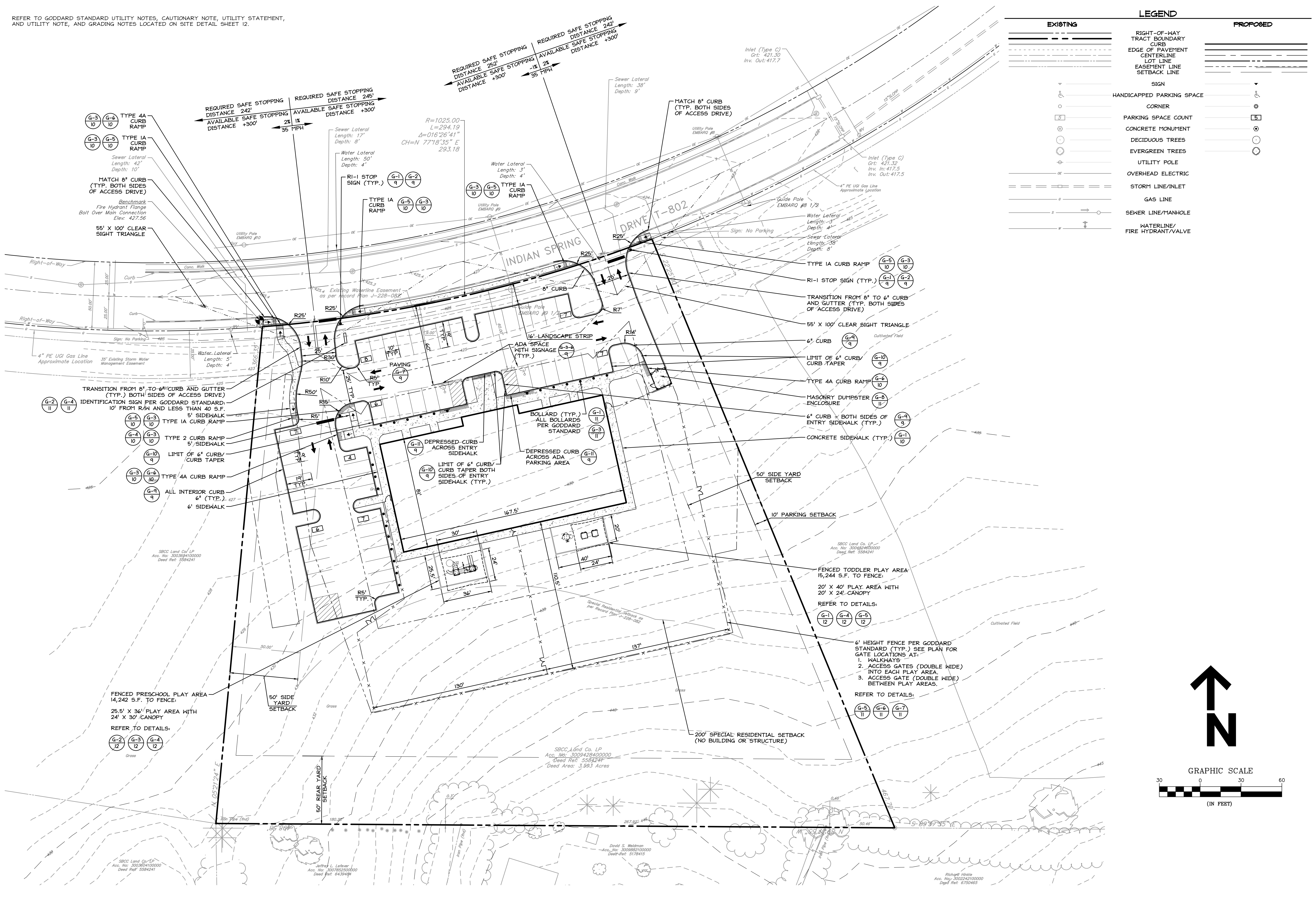
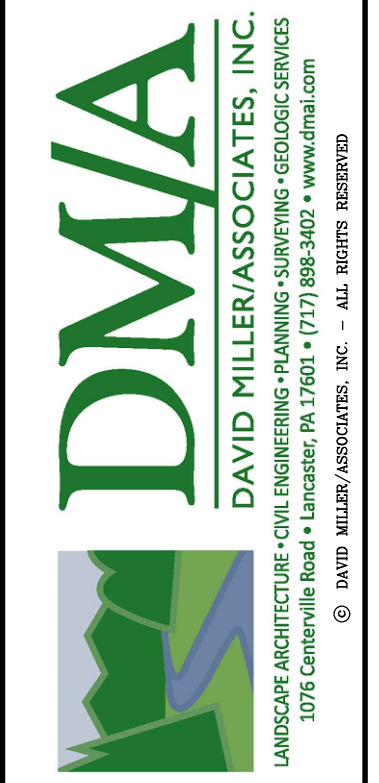


REFER TO GODDARD STANDARD UTILITY NOTES, CAUTIONARY NOTE, UTILITY STATEMENT, AND UTILITY NOTE, AND GRADING NOTES LOCATED ON SITE DETAIL SHEET 12.



EXISTING	LEGEND	PROPOSED
---	RIGHT-OF-WAY	---
---	TRACT BOUNDARY	---
---	CURB	---
---	EDGE OF PAVEMENT	---
---	CENTERLINE	---
---	LOT LINE	---
---	EASEMENT LINE	---
---	SETBACK LINE	---
---	SIGN	---
---	HANDICAPPED PARKING SPACE	---
---	CORNER	---
---	PARKING SPACE COUNT	---
---	CONCRETE MONUMENT	---
---	DECIDUOUS TREES	---
---	EVERGREEN TREES	---
---	UTILITY POLE	---
---	OVERHEAD ELECTRIC	---
---	STORM LINE/INLET	---
---	GAS LINE	---
---	SEWER LINE/MANHOLE	---
---	WATERLINE/FIRE HYDRANT/VALVE	---



CLIENT / OWNER / APPLICANT
RAJ SURAPENI
 6125 LOG CABIN TRAIL
 ENOLA, PA 17025
 (856) 340-5019

LAND DEVELOPMENT PLAN
STONY BATTERY LOT 5
 WEST HEMPFIELD TOWNSHIP, LANCASTER COUNTY, PENNSYLVANIA

PRINCIPAL B. SWERNIK	PROJECT MANAGER B. SWERNIK
DRAWN BY R. MALLOY	CHECKED BY B. SWERNIK
JOB NO. 23-132	DRAWING NO. 23-132.1
FILE NO. 231321LANDDEVELOPMENT	SCALE 1"=30'
DATE 01-25-24	SHEET NO. 3 OF 19